

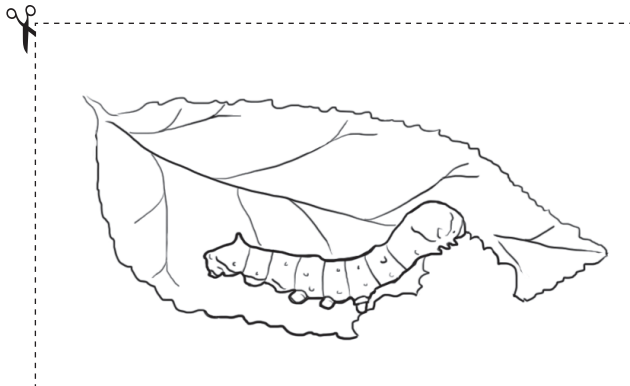
# Stella the Silkworm

Use the *Stella the Silkworm* book to help you with this activity about the silkworm's life cycle.

- 1 Cut out the four pictures and the four label boxes.
- 2 Glue the pictures in the correct life cycle order.
- 3 Then glue the correct label next to each one.
- 4 Draw an arrow in red between each life cycle stage and number them 1, 2, 3 or 4.
- 5 Give your diagram the title 'Silkworm life cycle' and write your name at the bottom.

## YOU WILL NEED:

- scissors
- a piece of paper
- glue
- a red pencil.

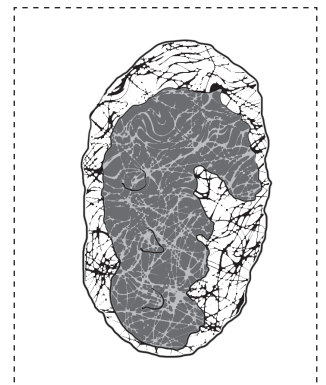
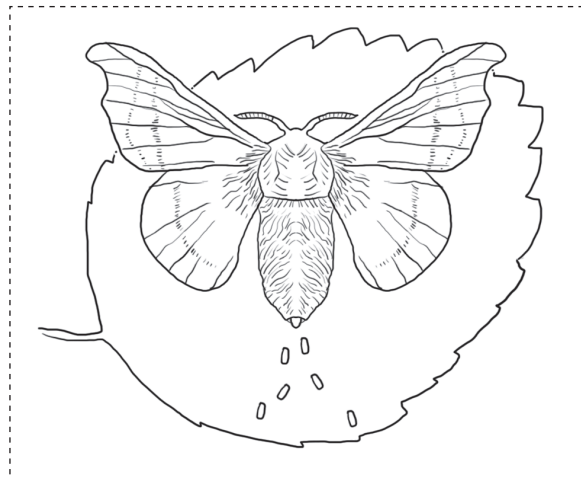


Adult silk moth  
emerges

Larva eats  
mulberry leaves

Larva spins a  
silk cocoon

Egg is laid and  
hatches in  
10–12 days



# Stella the Silkworm

Below are two pieces of clothing.  
 One is made from wool and the other is made from silk. Read the 12 sentences below. Do they refer to silk or wool? Write a **W** for wool or **S** for silk in the boxes provided.

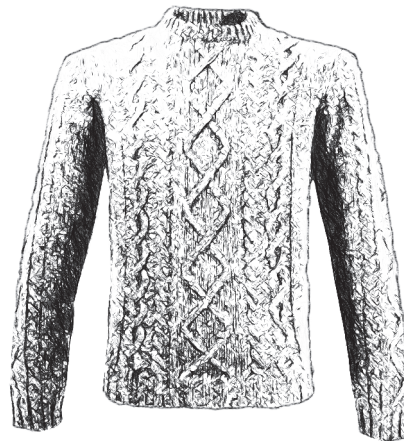
💡 **HINT** 💡

Read the inside cover of the book for help with the answers.

**SILK (S)**



**WOOL (W)**



- 1 Comes from sheep .....
- 2 Used to make brightly coloured clothing ....
- 3 Extremely strong fibre .....
- 4 First used in China .....
- 5 Woven into fabric .....
- 6 Warm and fluffy .....
- 7 Comes from an insect .....
- 8 Used mainly for warm clothing .....

NAME